

HOSEGUARD®

Air fuse for compressed air
made of aluminum and stainless steel



Air fuse – Protection of Personal, Machinery and Equipment.

If a sudden rupture occurs in a compressed air system or hose, the air fuse automatically cuts off the air supply when the air flow exceeds a set value. HoseGuard® is designed to allow a constant bleed of compressed air through a tiny nozzle to re-pressurize the system and re-open HoseGuard® once the broken hose has been repaired (reset function).

Protect your most important assets: your employees and their equipment!

Technical data HoseGuard® Aluminium

Media: Compressed air
Diameter BSP / NPT: 1/4", 3/8", 1/2", 3/4", 1"
Max. inlet pressure P₁: 18 bar
Working temperature: -20°C to +80°C (1/4" – 1/2")
-20°C to +120°C (3/4" – 1")

Material

Body: Aluminium
Piston: ≤ 1/2" – POM
> 1/2" - Aluminium

O-ring: NBR
Pressure loss Δp: 0.1 bar – 0.4 bar

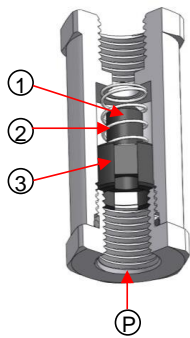
General function description

P is the inlet.

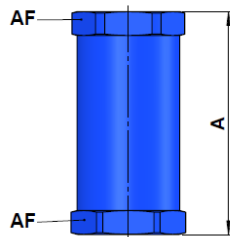
The air passes the piston 1 and continues through the seat.

The air flow, passing the piston, is slowed down by means of some lengthwise grooves 3 on the outer side of the piston.

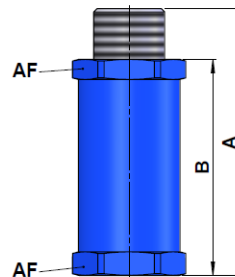
If the flow is too high, the air cannot pass the piston quickly enough, and the piston will be pressed against the spring 2 towards the seat. The closing point is shown in the graphic (see p. 3-6). If the value indicated is exceeded, e.g. if the hose suddenly breaks, the air supply is automatically shut off.



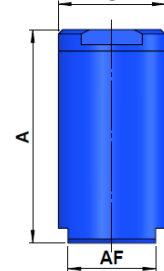
1/4", 3/8",
1/2" IG/IG*



1/4", 3/8",
1/2" IG/AG*



3/4",
1 1/4" IG/C



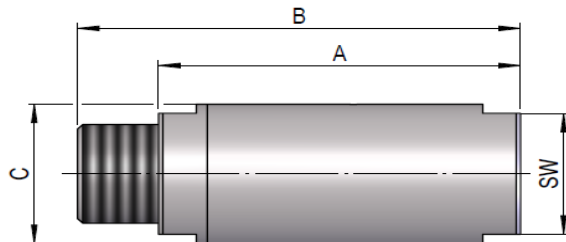
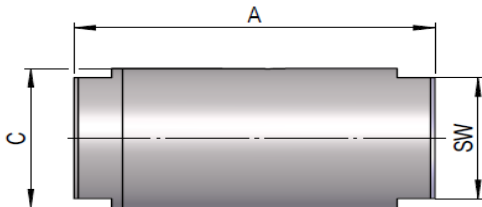
HOSEGUARD							
No. TRI-MATIC	Nennweite / Diameter	Gewinde* Thread	A	B	C	AF	Gewicht / Weight gr
1707804	1/4"	IG/IG	49	-	22	22	33
1704848	1/4"	IG/AG	58.5	48.5	22	22	40
1713162	1/4" Low Flow	IG/IG	49	-	22	22	33
1713161	1/4" High Flow	IG/IG	49	-	22	22	33
1716276	1/4" Low Flow	IG/AG	58.5	48.5	22	22	40
1707805	3/8"	IG/IG	58	-	27	27	58
1704849	3/8"	IG/AG	69.5	58	27	27	67
1717494	3/8" High Flow	IG/IG	58	-	27	27	58
1717495	3/8" High Flow	IG/AG	69.5	58	27	27	67
1707806	1/2"	IG/IG	65	-	30	30	78
1704850	1/2"	IG/AG	79	64	30	30	85
1720822	1/2" Low Flow	IG/IG	65	-	30	30	78
1720823	1/2" Low Flow	IG/AG	79	64	30	30	85
1717492	1/2" High Flow	IG/IG	65	-	30	30	78
1717493	1/2" High Flow	IG/AG	79	64	30	30	85
1707456	3/4"	IG/IG	76	-	36	30	107
1714682	3/4" High Flow	IG/IG	76	-	36	30	107
1707807	1"	IG/IG	100	-	50	41	320
1716234	1" High Flow	IG/IG	100	-	50	41	320

* IG/IG = Thread female/female

* IG/AG = Thread female/male

HOSEGUARD® INOX

Air fuse for compressed air
made of stainless steel



Technical data Inox

Media: Compressed air
Diameter BSP / NPT: 1/4", 1/2"
Max. inlet pressure P₁: 18 bar
Working temperature: -20°C to +80°C

Material

Body: Stainless steel DIN 1.4404 / AISI 316L
Piston: POM
O-ring: NBR
Pressure loss Δp : 0.1 bar – 0.4 bar

On request:

Other dimensions

HOSEGUARD INOX							
	Diameter	Thread	A	B	C	SW	Weight gr
	1/4"	IG/IG	50	-	19.5	17	67
	1/4"	IG/AG	50	60	19.5	17	77
	1/4" Low Flow	IG/IG	50	-	19.5	17	67
	1/4" Low Flow	IG/AG	50	60	19.5	17	77
	1/4" High Flow	IG/IG	50	-	19.5	17	67
	1/4" High Flow	IG/AG	50	60	19.5	17	77
	1/2"	IG/IG	67	-	30	26	192
	1/2"	IG/AG	67	81.5	30	26	232
	1/2" Low Flow	IG/IG	67	-	30	26	192
	1/2" Low Flow	IG/AG	67	81.5	30	26	232
	1/2" High Flow	IG/IG	67	-	30	26	192
	1/2" High Flow	IG/AG	67	81.5	30	26	232

* IG/IG = Thread female/female

* IG/AG = Thread female/male