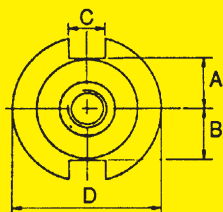
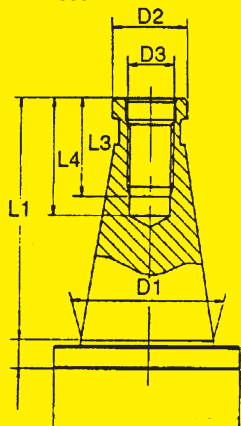


Tool holders

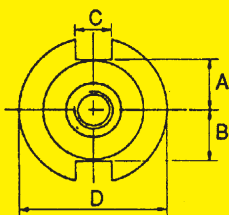
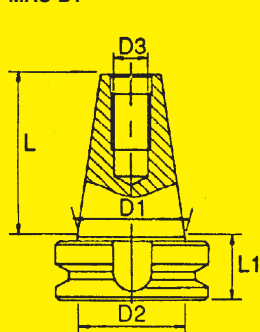
according to Swedish Standard SS 312. (Corresponds in appropriate parts with ISO 297.)

DIN 2080



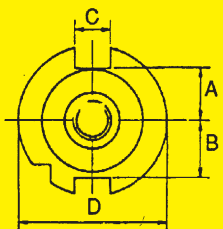
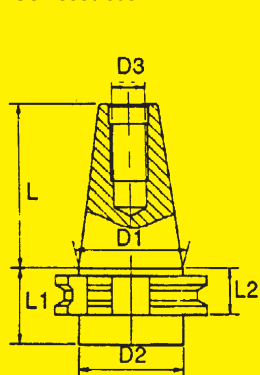
Attachment	D 1	D 2 a 10	D 3	L 1 h 12	L 2 ±0,2	L 3	L 4	A	B	C
ISO 30	∅ 31,75	∅ 17,4	M 12	64,4	9,6	24	34	16,2	16,2	16,1
ISO 40	∅ 44,45	∅ 25,3	M 16	93,4	11,6	32	43	22,5	22,5	16,1
ISO 50	∅ 69,85	∅ 39,6	M 24	126,8	15,2	47	62	35,3	35,3	25,7

MAS-BT



Attachment	L -0,2	L 1 ±0,1	D ±0,05	D 1	D 2 -0,5	D 3	A ±0,2	B ±0,2	C H 12
BT 40	65,4	27	∅ 63	∅ 44,45	∅ 53	M 16	22,5	22,5	16,1
BT 50	101,8	38	∅ 100	∅ 69,85	∅ 85	M 24	35,3	35,3	25,7

ISO 7388 / 69871



Attachment	L -0,2	L 1 ±0,1	L 2 ±0,05	D	D 1	D 2 -0,5	D 3	A ±0,4	B ±0,4	C H 12
ISO 40	68,4	35	19,1	∅ 63,5	∅ 44,5	∅ 44,7	M 16	22,8	25	16,1
ISO 45	82,7	35	19,1	∅ 82,5	∅ 57,40	∅ 57,4	M 20	29,1	31,3	19,3
ISO 50	101,75	35	19,1	∅ 97,45	∅ 69,85	∅ 70,7	M 24	35,5	37,7	25,7